

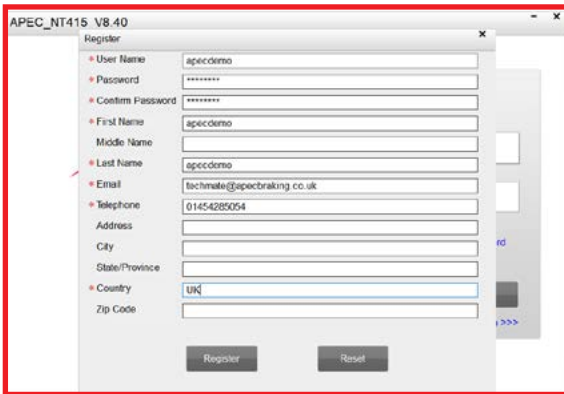
# Apec NT415 EPB Tool.

## How to register and update your EPB Tool.

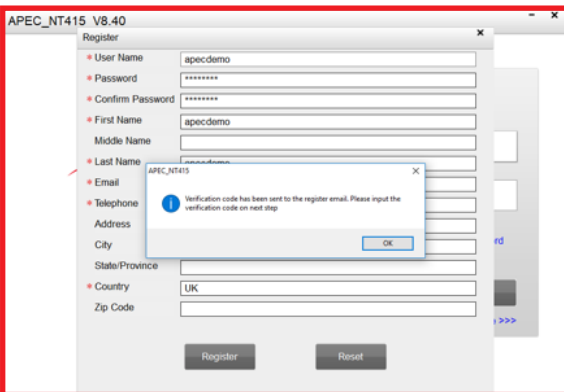
- 1 Once you have downloaded the application, open and click register.



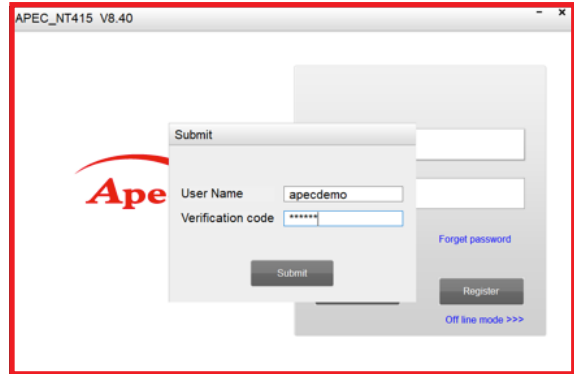
- 2 Fill out the on-screen form. Please note that the password must be between 6-16 characters. Once the form is completed, click register.



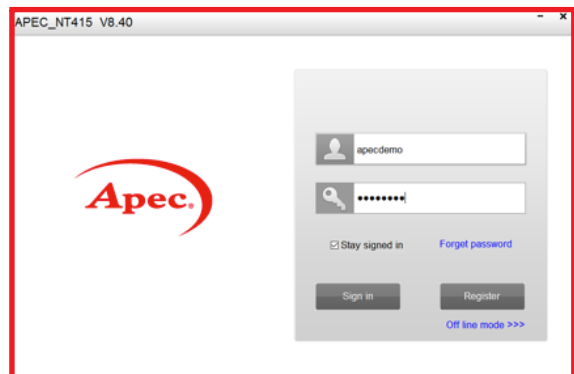
- 3 Once you have hit register, check your emails for the verification code. You may need to also check your junk and spam folders.



- 4 Enter the verification code and click submit. This should complete the account setup side of the process.

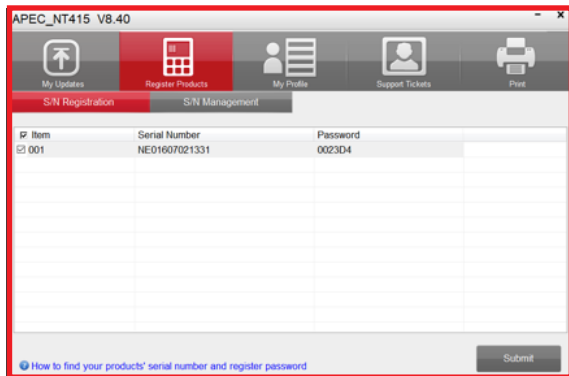


- 5 On the home screen enter the username and password that you used for the registration process.



- 6 Along the top menu select Register Products and in the sub menu select S/N Registration.

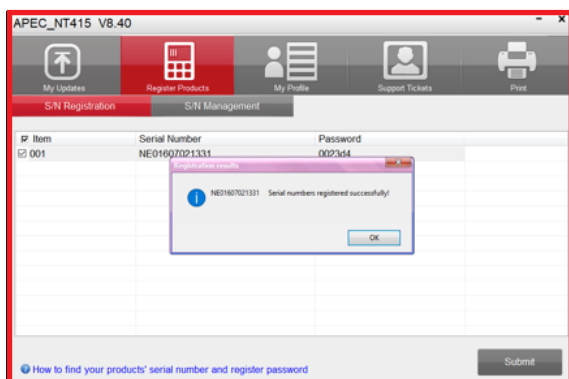
Check the 001 tickbox and then click under where it says Serial Number.



Then enter the serial number of the tool. This can be found on the back of the tool or on the about screen in the setup menu of the tool.



Then click under Password and enter the password from the about screen in the setup menu of the tool. (Please note, this is not the password you used to register for access to the application).



Once you have done this, select Submit. The serial number should be successfully registered.

- 7 To update the tool to the latest version, select 'My Updates' from the top menu. Take the SD card out of the tool and insert in the SD card reader of your computer. You should see the SD card and the serial number of the tool appear in the drop downs. Any available updates will then be displayed. Check the tick boxes of the updates that you want and click update. Allow the application to download the updates and install onto the SD card. Once complete, safely remove the SD card from your computer and re-insert in to the Apec EPB Tool. The tool is now ready to use.

